



OPMANTEK

NETWORK MANAGEMENT AND IT AUDIT SOFTWARE



Importing and Configuring the Opmantek VM - v1.0, July 2018



We will send you the recording.



Submit your questions anytime. We'll do Q&A throughout.



Please complete the Exit survey.

Topics for Today

Why recreate the wheel when you can quickly and easily deploy Opmantek's most sought-after solutions pre-configured and ready to go? In this 30-minute session we will discover:

- How to deploy the Opmantek VM across various Host systems
- Rules for resizing the VM to support your monitoring environment
- Basic configuration requirements
- Maintaining the VM, including software updates

References

Opmantek Virtual Appliance...

Installation and Getting Started

<https://tinyurl.com/ybqqn66h>

Opmantek Downloads Page

<https://opmantek.com/network-tools-download/>

CentOS and YUM Update

<https://tinyurl.com/llduag9>

HOW TO DEPLOY THE OPMANTEK VM

Opmantek Solutions

Modules in RED are NOT preinstalled on the Opmantek VM

NMIS – Performance and fault monitoring

Open-Audit – Scalable device discovery and auditing

opCharts – Dynamic, interactive charting and custom dashboards

opEvents – Powerful, intelligent event response

opConfig – Capture, track and push configuration changes

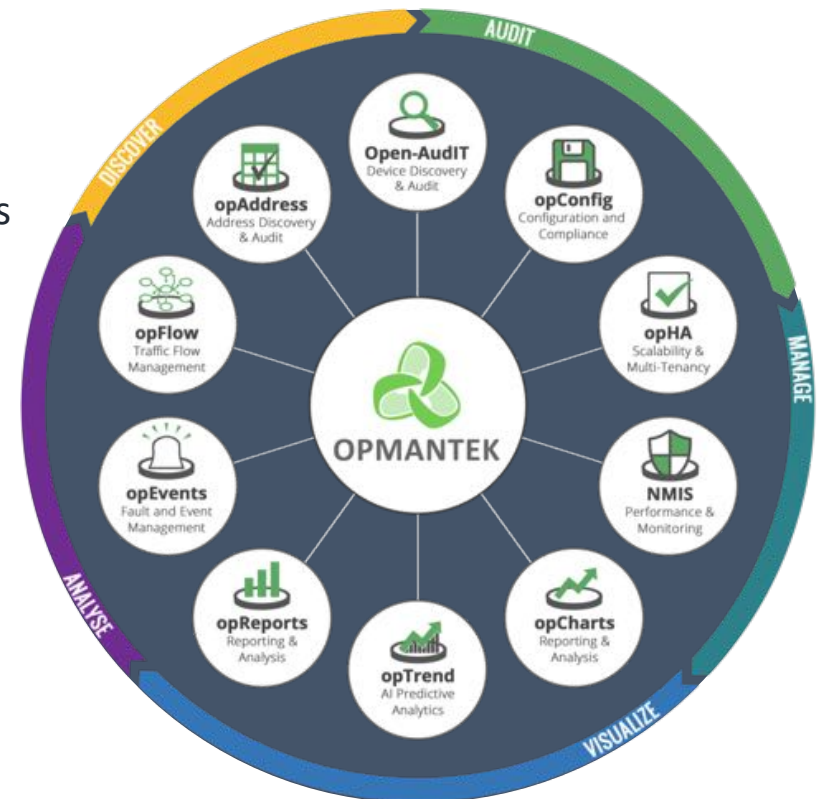
opReports – Expert reporting with traffic lights and actions

opTrend – Predictive analytics engine

opHA – High availability and multi tenancy

opFlow – Netflow and IP-Fix analysis

opAddress – Light weight, simple IP address management



Deploying the Opmantek VM

Basic Setup

- Provided by Opmantek as a courtesy, makes it easy to trial and deploy Opmantek solutions
- Most recent build January 31, 2018
- Based on CentOS 6.9, fully patched as of build date
- Available from Opmantek/Downloads page
- Packaged as an OVA file for interoperability
- Sorry, no Docker Container available yet (although you could build one)
- VM is sized for a “small” deployment, should be resized based on your environment
 - 2 vCPU, 2GB RAM, 2 40GB drives – 1 for OS/Programs, 1 for data

Importing the Opmantek VM

OVA Compatibility

- VMWare / VMWare Fusion
- VirtualBox
- Hypervisor
- Hyper-V

GUIDELINES FOR RESIZING THE VM

What Impacts Server Resources

Modules in RED are NOT preinstalled on the Opmantek VM

NMIS – Devices and services monitored; RAM/Disk space

Open-Audit – Concurrent discoveries; RAM/Disk speed

opCharts – Concurrent users; RAM/Disk Speed

opEvents – Events/second; CPU/RAM/Disk speed

opConfig – Devices collect; RAM/network speed

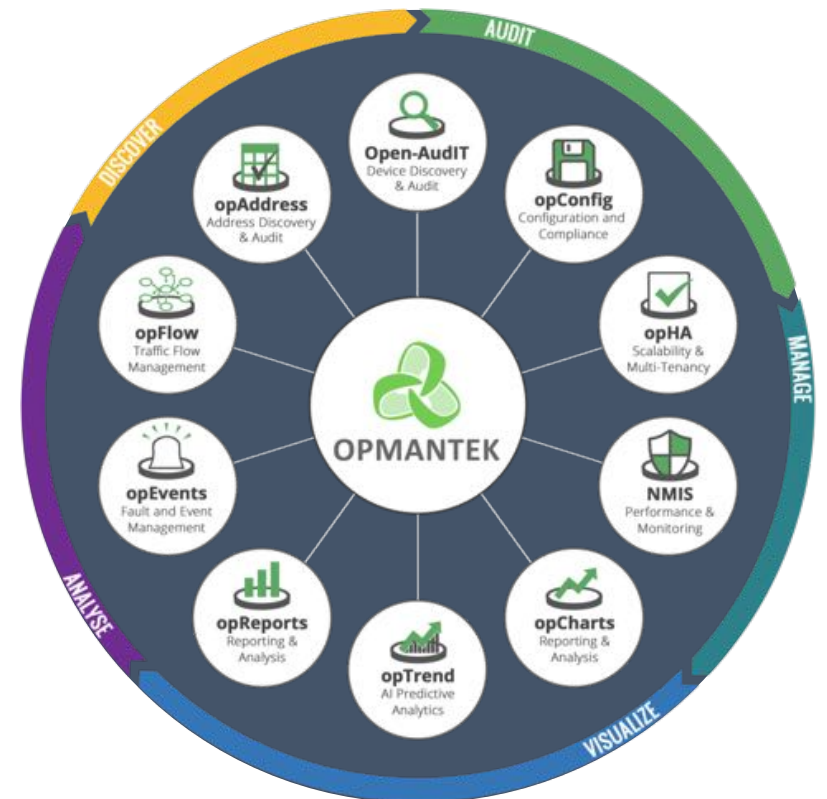
opReports – Low impact

opTrend – Devices trended; CPU/RAM

opHA – Low Impact

opFlow – Agents and flows processed; CPU/RAM/Disk speed

opAddress – Low Impact



Deploying the Opmantek VM

Minimum Resources Needed

	Small	Medium	Large	opFlow	Massive
Applications	NMIS Only	All	All	opFlow	All
Storage	60GB	80GB	160GB	> 160GB	300GB
Memory	2GB	4Gb	8GB	8 - 16GB	12 - 16GB
CPU	2vCPU	4vCPU	4vCPU	4vCPU	6 - 8vCPU
Device Count	< 500	< 1,500	< 2,500	N/A	Large #
Element Count	2,000	8,000	14,000	N/A	Large #

BASIC CONFIGURATION REQUIREMENTS

Basic Configuration Requirements

What Needs to Be Configured *After* you Import and Size the VM

- Credentials for Shell/Console Access to VM: <https://tinyurl.com/ycdnc7d3>
- Network Configuration (i.e. static IP or DHCP)
- Assign a Hostname; */etc/sysconfig/network*, and */etc/hosts*
- Configure DNS name servers; edit */etc/sysconfig/network-scripts/ifcfg-eth0*
 - Note: don't add to */etc/resolve.conf* unless *PEERDNS=no* in interface config
- NTP preinstalled and configured to use CentOS NTP server pool
 - Confirm daemon with *service ntpd status*, and edit configuration in */etc/ntp.conf*
- Restart network services to ensure changes will persist: */etc/init.d/network restart*

MAINTAINING THE VM

Maintaining the VM

How to patch the VM's OS, Underlying Programs, and Opmantek Modules

- Update server using YUM (i.e. *yum update*, <https://tinyurl.com/llduag9>)
- Download and install most recent versions of all modules
 - See: http://<server_ip>/omk for list of versions
 - Updates available here: <https://opmantek.com/network-tools-download/>
 - Installer Instructions: <https://tinyurl.com/y8vjgoc5>

CONTACT FOR FOLLOW UP

Commercial enquiries:

Tom Wiri

Account Executive

+1 (512) 430-4450

usa@opmantek.com

Technical enquiries:

Mark Henry

Senior Engineer

+1 (207) 951-2428

markh@opmantek.com



OPMANTEK